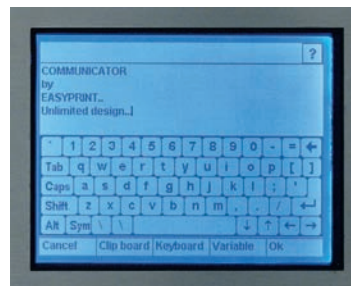
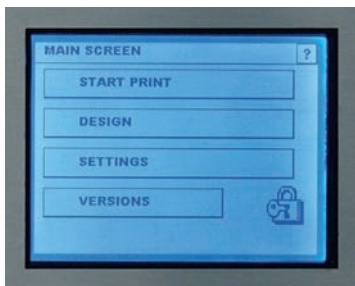


# unicontrol

All the EASYPRINT models are supplied with a 5.7" LCD touch screen, and have an easy, accessible menu structure. The design of the print can be easily adjusted using the touch screen or with external PC software. It is up to the user – design options are the same for both solutions. Once the print is designed, just save it on compact flash cards, which come as standard with the printer. Furthermore, all models are integrated with an online manual which the user can always use to obtain an explanation of a specific function.



*Protected UNICONTROLLER for harsh environment (option for S/IM/CM, delivered as standard with the COMMUNICATOR)*

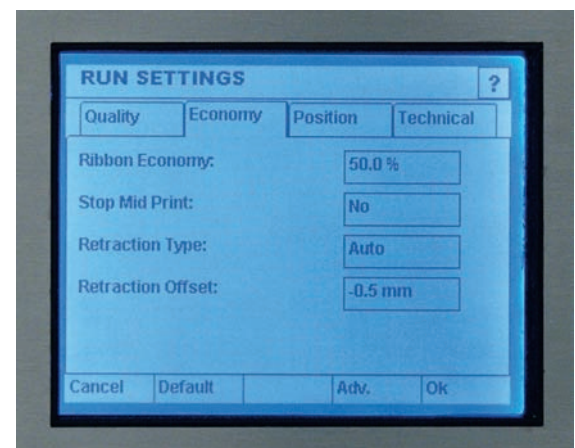
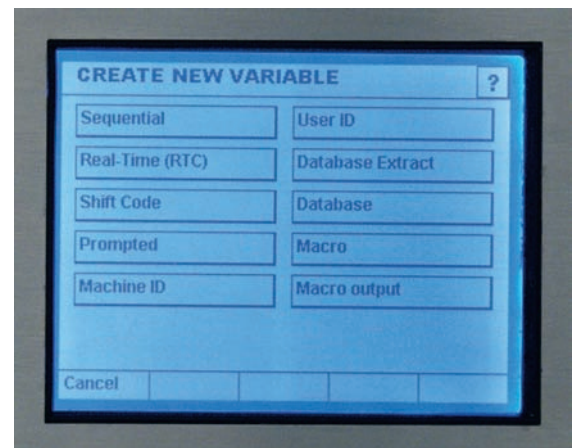


The EASYPRINTERS meet the powerful demand for automation. All variable data, such as expiry date, production date, shift codes, sequential numbers, machine ID, Real Time Clock, can all be entered effortlessly. Furthermore, the printers have a development environment, which ensures that customers with very specific marking requirements are fully satisfied. The development environment function is configured such that users can set up macros to define their UNICONTROLLER to calculate and print the exact data required.

As a new feature, the user is free to concentrate on diverse printer settings, which have previously been very much a characteristic of thermal transfer solutions. Based on the specified design, the UNICONTROLLER itself sets the parameters, which affect the quality of the print, and the parameters, which minimise the consumption of foil.

All the EASYPRINT models include a sophisticated user administration, area that provides the responsible person with the option to lock all features unnecessary for the daily production away.

The UNICONTROLLER comes with a built-in Ethernet port as standard and is thus network able from delivery - a feature which can only underline the fact that this printer is as close as you can get to a perfect, complete thermal transfer printer that meets current and future requirements for coding, marking or printing on flexible material.



# Technical data

|                               | SCM   | SIM                             | CM2   | CM5   | IM2                             | IM5                             | COMMUNICATOR                                      |
|-------------------------------|---|---------------------------------|---|---|---------------------------------|---------------------------------|---|
| <b>Print density</b>          | 300 dpi   |                                 |   |   |                                 |                                 |   |
| <b>Print speed</b>            | 50 - 1000 mmr/sec   | 50 - 600 mmr/sec                | 50 - 1000 mmr/sec                                 | 50 - 800 mmr/sec                                  | 50 - 600 mmr/sec                | 50 - 600 mmr/sec                | 50-1400 mmr/sec                                   |
| <b>Print area</b>             | 53mm*2700mm   | 53mm*55mm                       | 53mm*2700mm                                       | 128mm*2400mm                                      | 53mm*106mm                      | 128mm*106mm                     | 53*2700mm   |
| <b>Design</b>                 | Standard: Onboard design software. Option: external windows based software: EASYDESIGN.   |                                 |   |   |                                 |                                 |   |
| <b>Graphics</b>               | Graphical logos up to max printing area.  |                                 |   |   |                                 |                                 |   |
| <b>Ribbon Length</b>          | 450 meter   | 450 meter                       | 450 meter   | 450 meter   | 450 meter                       | 450 meter                       | 1400 meter  |
| <b>Ribbon Width</b>           | 20mm-55mm   | 20mm-55mm                       | 20mm-55mm   | 20mm-130mm  | 20mm-55mm                       | 20mm-130mm                      | 20mm-55mm   |
| <b>Ribbon saving Features</b> | EASYPRINT patented fading and retraction system.*   | EASYPRINT standard gap minimize | EASYPRINT patented fading and retraction system.* | EASYPRINT patented fading and retraction system.* | EASYPRINT standard gap minimize | EASYPRINT standard gap minimize | EASYPRINT patented fading and retraction system.* |
| <b>Special Functions</b>      | Integration with Databases – Ultra high-speed data transmission ensures fast upload. Development KIT** Auto real time and date, auto incrementing number and barcodes, auto best before date calculations. Upload new designs and modify printer settings while the printer is running. User/Password administration. |                                 |   |   |                                 |                                 |   |
| <b>Alarm Output</b>           | Low Ribbon Warning, Ribbon End General faults.  |                                 |   |   |                                 |                                 |   |
| <b>Display</b>                | 5.7" Intuitive touchscreen.   |                                 |   |   |                                 |                                 |   |
| <b>Network</b>                | Ethernet 10/100 base TX   |                                 |   |   |                                 |                                 |   |
| <b>Temperature</b>            | 5C-45C  |                                 |   |   |                                 |                                 |   |
| <b>Humidity</b>               | 10-80% without condensation.  |                                 |   |   |                                 |                                 |   |
| <b>Electrical</b>             | 115/230 VAC, 50/60 HZ, 300VA  |                                 |   |   |                                 |                                 |   |
| <b>Compressed Air</b>         | 10 LT/MIN @ 6 BAR, MAX  |                                 |   |   |                                 |                                 |   |

\* The ribbon saving system can reduce the ribbon costs by up to 80% compared to traditional thermal transfer printers.

\*\* Development KIT is an environment in the controller in which users with specific requirements can programme the printers with macros. Provides the printer with previously unseen flexibility.

EASYPRINT A/S • Metalgangen 19F • 2690 Karlslunde DK

phone +45 4615 4140 • fax +45 4615 4170

mail2@easy-print.com • www.easy-print.com



EASYPRINT specialises in thermal transfer printing technology. The ideal solution when printing onto PE, PP, paper, Tyvek®, etc. The systems are electronically controlled, making it simple to design and change the layout. Thermal printing always results in a sharp, clear

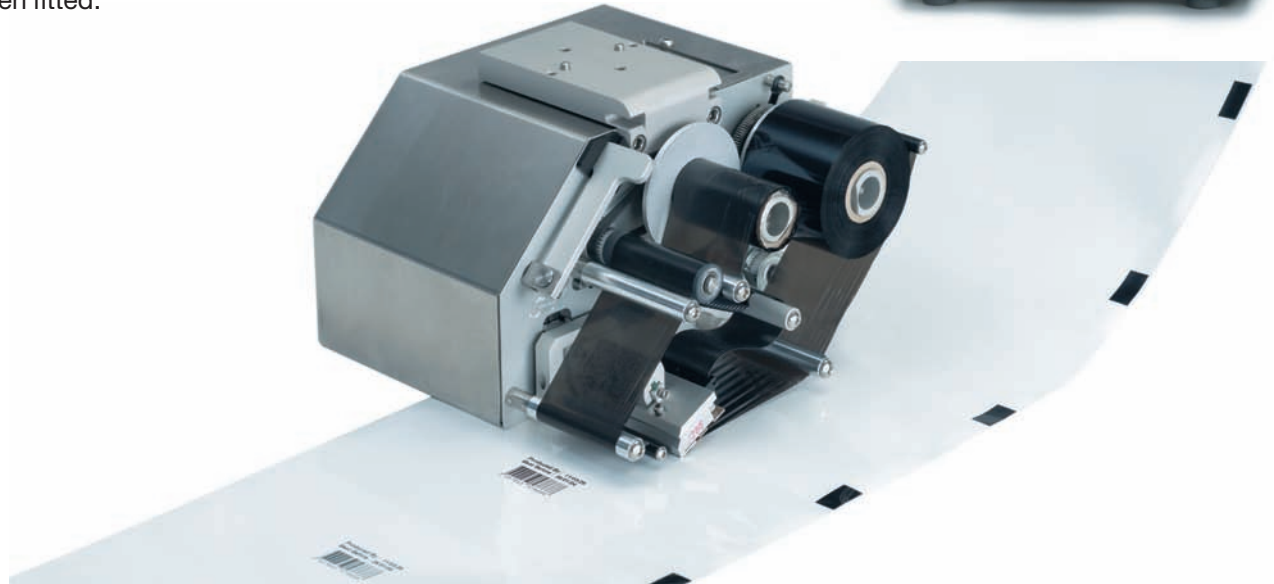
image without compromising the print speed or production speed.

EASYPRINT provides a comprehensive range of high-speed thermal transfer coders and printers for intermittent / continuous motion vertical and horizontal form, fill & seal machinery.

# s-model

## s-im

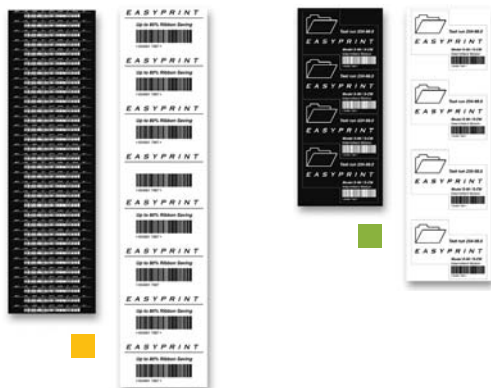
The S-IM is an intermittent printer designed primarily to be installed on all labelling lines and packaging machines where high quality coding is required. The S-IM model covers a print area of 53 mm x 55 mm and can run at speeds of up to 600 mm/sec. This frees up new resources for intermittent labelling and packaging machines that are able to exploit their full potential when the S-IM has been fitted.



## S-CM

The S-CM works continuously at speeds of up to 1000 mm/sec at 300 DPI and covers a print area designed to accommodate even the most complex applications. The S-CM easily covers areas up to 53 mm x 2400 mm without reducing or compromising either the print speed or print quality.

The S-CM supports EASYPRINT's patented FADING and RETRACTION technology. Savings of up to 80% on the original ribbon consumption may be achieved.



- Used ribbon with fading activated and print result.
- Used ribbon with retraction activated and print result.

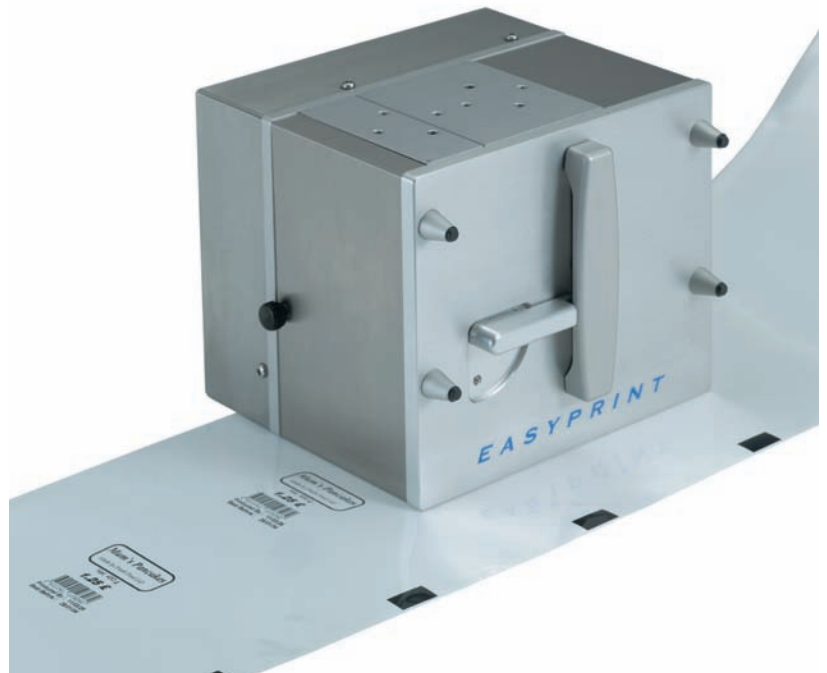
The technical features outlined combined with the size and low acquisition cost of the printers, open up new opportunities for in-line printing.

EASYPRINT has taken one step closer to its main goal: to supply superior coding solutions that can be integrated into any production line.

## im-model

The IM type printer is for use in intermittent applications and can be mounted on all types of vertical and horizontal packaging machines.

Two IM types are available; the IM2 and the IM5.



With its maximum print area of 128mm x 106mm, the IM5 offers the largest print area on the market. The IM5 has a maximum print speed of 600mm/sec.



## cm-model

The CM type is easy to install on any vertical or horizontal packaging machine and is designed for continuous operation.



The CM type is available in two versions:

CM2:  
Print area 53mm x 2700mm  
Print speed 1000mm/sec

CM5:  
Print area 128mm x 2400mm  
Print speed 1000mm/sec



■ Used ribbon with fading activated and print result.  
■ Used ribbon with retraction activated and print result.

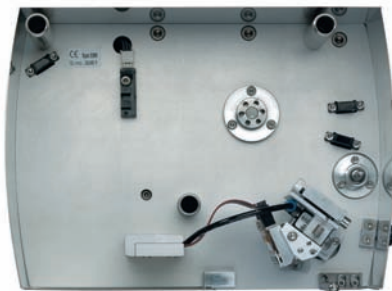
The CM also supports EASYPRINT's patented FADING and RETRACTION technology. Savings of up to 80% on the original ribbon consumption may be achieved.

# communicator

The COMMUNICATOR can print from 50 mm/sec to 1400 mm/sec. The printer can print at high quality in extreme accelerations and decelerations – with unprecedented precision, following the packaging machine's speed. This means that the COMMUNICATOR can be integrated with both intermittent and continuous packaging lines. The production will then have optimum flexibility where the COMMUNICATOR can be used on all packaging lines – regardless of whether they are continuous or intermittent.



Protected controller for harsh environment.



Simple and robust design makes the COMMUNICATOR maintenance free.

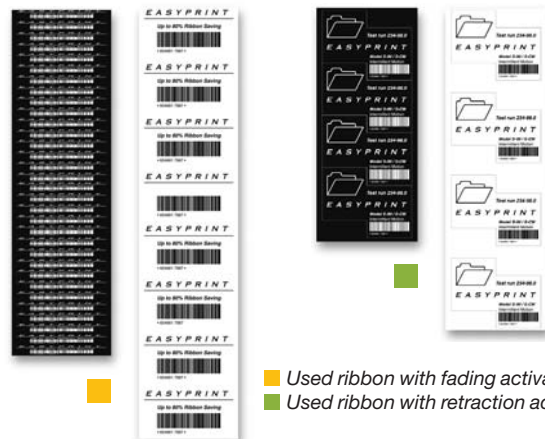
- Like the S-CM and CM models, the COMMUNICATOR has a unique system, which can reduce ribbon consumption considerably.

The COMMUNICATOR can control the foil feed in both directions. If there is a smaller interval between two prints, the printer will reset the ribbon automatically, thus eliminating any foil wastage. The patented "Fading" system also allows up to 80% ribbon saving. This "Fading" system results in the print used on the ribbon being less than the actual print achieved – a feature which for many users will reduce the costs of labelling by at least 20% in relation to competing printers in used ribbon.

Mechanical achievements: The COMMUNICATOR is maintenance free in mechanical terms. The production line is thus ensured maximum uptime.

The foil cassette on the COMMUNICATOR is both very robust and simple – a guarantee for rapid foil replacement.

With EASYPRINT's sophisticated foil feed, 1400-metre foil rolls can be inserted into the COMMUNICATOR – this is an increase of 50% in relation to its closest competitor.



Used ribbon with fading activated and print result.  
Used ribbon with retraction activated and print result.